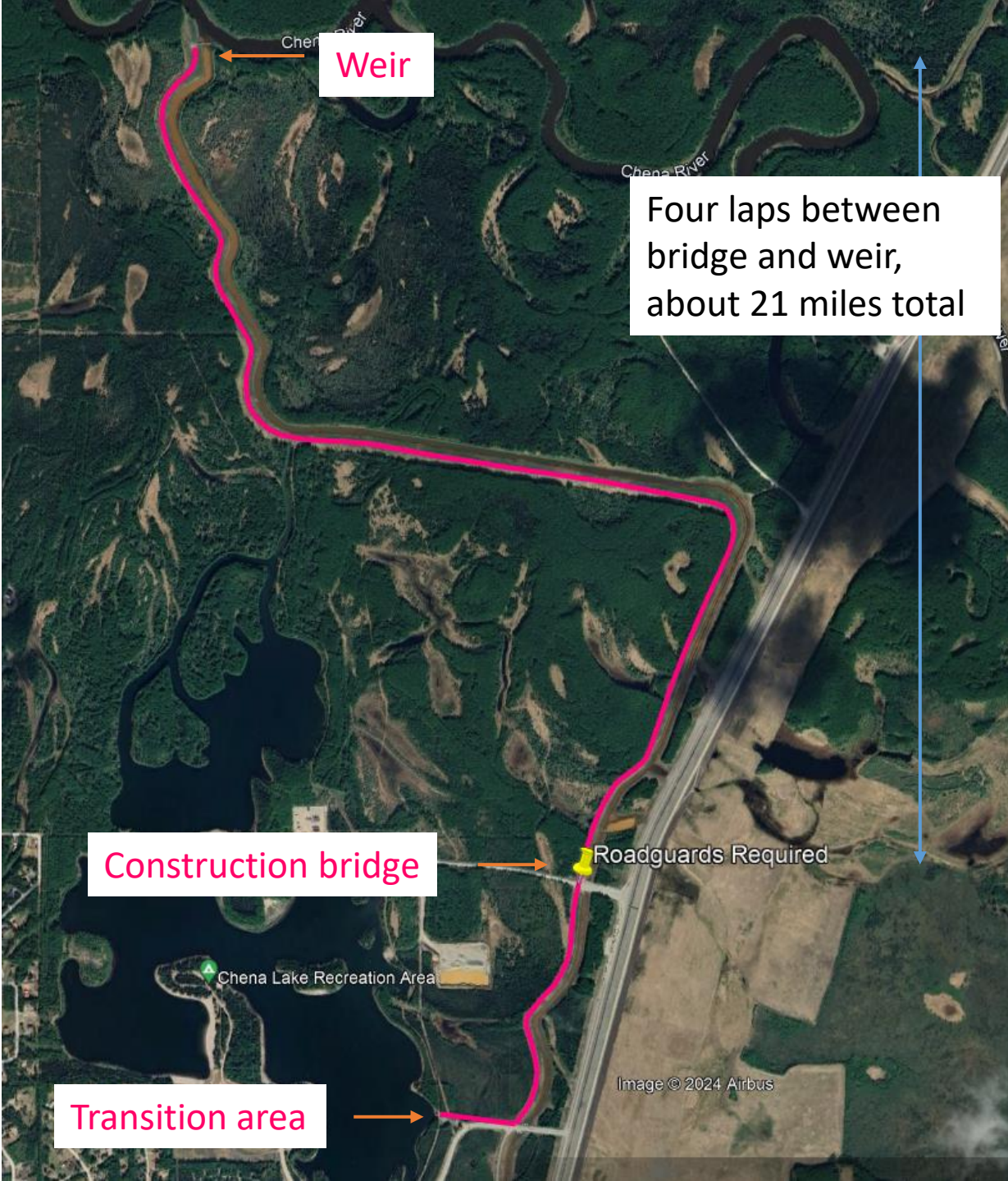


# North Pole Triathlon 2024 bike course

Total distance about  
22.5 miles

The route starts at the  
bottom of this map  
and goes to the top  
then, after 4 loops of  
most of the course,  
back to the bottom to  
finish the bike



Four laps between  
bridge and weir,  
about 21 miles total

Middle of bike course:  
Complete four loops on a 1-1/2 lane  
wide dirt road on the dike  
Construction bridge to weir one way  
is 2.62 miles  
Round trip 5.24 miles per loop

Construction bridge → Roadguards Required

Transition area →

Beginning and end of bike course:  
East Lake parking lot/transition area  
to construction bridge one way is  
0.69 miles